

THE SHOE QUARTER NEWS



April 2023

Management Memo

Welcome to all of our new tenants and co-workers. We hope that you enjoy being a part of The Shoe Quarter community. We would like to extend huge thanks to everyone who got involved in the recent filming and photography around the building, watch out for the results in our marketing and forthcoming website updates.



We are always looking for content for the monthly newsletter, along with any general feedback you may have for us, so if you have news or views to share, please email clare@our.place and we'll aim to include them in the next issue.

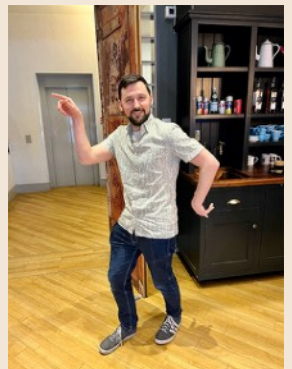
Tenant Drinks

We will be holding the next tenant drinks in reception on Wednesday 19th April from 4pm, we look forward to seeing you for nibbles, drinks and a chat.

Comic Relief - Thank you

Thank you to everyone who donated and participated in "Silly Shirt Day" for Comic Relief, we raised £108.80.

The winner of the shirt competition was Roozbeh from Qoda Consulting with his fabulous Sponge Bob shirt, congratulations, we hope you enjoyed the vino!!



TENANT'S NEWS

BREAD
HOSPITALITY



Toast Kitchen & Milk Kitchen

Yalm Food Hall

22-24 The Royal Arcade, Norwich NR2 1NQ

If you've not been yet, do get yourself to Toast Kitchen and Milk Kitchen at Yalm. It's proving to be an amazing hit with those seeking awesome brunch and soft scoop treats!

With an incredible team creating amazing dishes, it has become a very popular destination. And they serve THE BEST hash browns in the country!



Phoenix Gym have just completed their new big equipment installation and refurbishment.



They are finding that the facility is now appealing to a wider audience so people who may not have found it to their taste are now very happy to join.

They have added an extension and had a room restructure so that there is now a dedicated cardio zone with ambient lighting, lot's of new equipment and extra machines, new flooring and ambient lighting throughout the whole gym, a new sound system in all areas and other improvements.

The website has a new gym video and they currently have a no joining fee promotion on. Residents can join on a corporate rate membership at just £21.99pm, so now even greater value with the new improvements.



Last month we invited everyone to visit a new health education website called Coeliac Insider. The response was great and the feedback for Satellite PR was invaluable.

"It enabled us to tell our client what works and what doesn't. It also gave traffic a boost which is also good so visiting alone was amazing for us." Said Pauline Kent from STPR who is inviting everyone to do it again and then email Pauline with one word - WINE or CHOC - and she will enter you into a prize draw to win one or the other.

All you have to do is visit www.coeliacinsider.com and then email Pauline pauline@satellitepr.com with the word WINE or CHOC. It's that easy!!!



Contact: T: 01603 219753 | E: thrive@stgeorgesworks.uk
Connect: stgeorgesworks.uk | [#stgeorgesworks](https://twitter.com/stgeorgesworks) | [@stgeorges_works](https://www.instagram.com/stgeorges_works)

OUR PLACE

TENANT'S NEWS



Emily Delva

Brighton Marathon

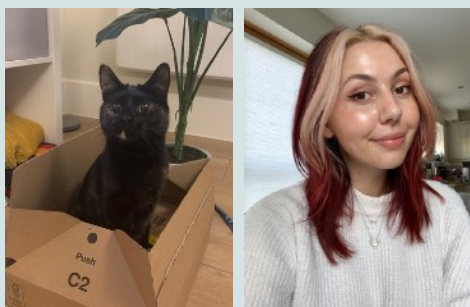
April 2023

“On April 2nd I’ll be running the Brighton Marathon and raising money for the Norwich branch of Cats Protection. I used to be a rower pre-Covid and once everything opened up again I figured I needed a new challenge! If you’ve ever seen me with a cat in the building, you’ve probably already guessed that I’m a Cat Lady (the tiny cat sometimes with me is called Pigeon!). Any donation to Cats Protection is much appreciated, the work they do is fantastic!”

You can donate via Emily’s Just Giving page [here](#)

Cats Protection is the UK’s leading feline welfare charity. Our vision is a world where every cat is treated with kindness and an understanding of its needs.

www.cats.org.uk for more information.



As an active supporter and champion of motorsport inclusivity, Jet Social’s Jess Shanahan has been appointed to Motorsport UK’s LGBTQ+ Expert Committee.

Motorsport UK is the governing body for four-wheeled motorsport in the UK representing competitors, volunteers, clubs, and fans. Through governance, innovation, and education, its mission is to celebrate and enable participation in motorsport in a safe, fair, fun, inclusive, and progressive environment.

Motorsport UK’s Equality, Diversity, and Inclusion (EDI) Committee uses research and its members’ expertise across four expert committees (LGBTQ+, Disability and Accessibility, Women in Motorsport, and Racial Diversity) to formulate strategies, policies, and actions for recommendation to the Board.



Jess says: “I’ve always tried to create a welcoming and inclusive environment in motorsport. Whether that’s supporting existing drivers through our Racing Mentor brand’s products and services, encouraging new people into the sport with free content and advice, or working with organisations such as Racing Pride to offer scholarships to LGBTQ+ people, this has been

vitaly important to me as I’ve built a business in motorsport.

“Joining Motorsport UK’s LGBTQ+ committee is the next step in that journey. I can’t wait to get started.”

QUOTE OF THE MONTH

The secret of change is to focus all your energy, not fighting the old, but on building the new.

- Socrates

www.catnash.com

From St Mary’s House in Norwich to St Mary’s Street in Bungay



is opening at
The Recycled Weasel
48 St Mary’s Street
Bungay, Suffolk
NR35 1AX

Opening day for the collection is
1st April 2023 (no joking)

Drinks & nibbles will be served
10am to 4pm



Sustainable Fashion



Contact: T: 01603 219753 | E: thrive@stgeorgesworks.uk
Connect: stgeorgesworks.uk | [#stgeorgesworks](https://www.instagram.com/stgeorgesworks) | [@stgeorges_works](https://www.instagram.com/stgeorges_works)

OUR PLACE

TENANT'S NEWS



As part of its community commitment, Candour has selected The Hamlet Centre Trust as its charity to support in 2023 and started with a £10,000 donation.

The Hamlet support over 500 families in the area with recreational, educational and social opportunities for children and adults with profound disabilities and complex health needs, running both a children's and adult's centre in Norwich.

Candour will also be planning fundraising events and doing volunteer days with the Hamlet during 2023. You can read more about this on our blog.



Available Spaces

Flexible offices available at:

St Georges Works:

3rd floor: 3.17 & 3.20

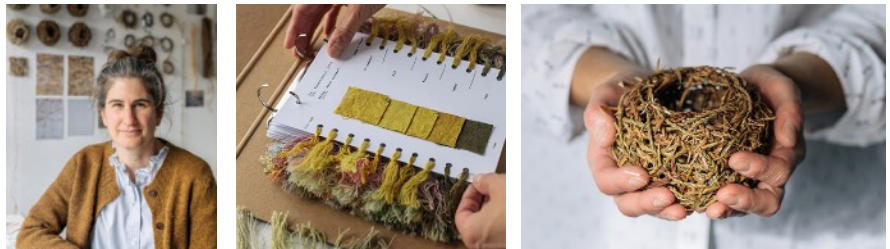
St Marys Works:

2nd floor: 8 & 8a

Seymour House:

Ground floor: Unit A & D

2nd floor: Unit L



"Hello, I'm Lizzie Kimbley, a textile artist and weaver based at Lion House Studios.

This spring I'm pleased to be taking part in a couple of exhibitions close to home. I'm one of 8 artists showing work in 'The Art of Waste' at GroundWork Gallery in Kings Lynn from 18 March – 15 July.

I'm also very excited to be showing work with Contemporary and Country in 'East to East' at The Stables, Houghton Hall from 23 April – 1 October.

Further afield, you can find my work at London Craft Week as part of Future Icons Selects from 11-14 May and stocked in Flow Gallery, London.

I'm a textile artist and weaver based in Norfolk. I work with woven textiles, natural dyes and basketry techniques to create contemporary artworks exploring responsible design and connection to place and nature. I would love to hear from you if you would like to purchase or commission work.

Website: www.lizziekimbley.com

Instagram: [@lizziekimbley](https://www.instagram.com/lizziekimbley)



"I took my 8 little travelling looms to the Forum to offer a 'Have a Go Day' and was overwhelmed by members of the public who sat down and enjoyed some quality time weaving and chatting.

This Festival seems to go from strength to strength each year, there is something of interest for everyone who enjoys making. The Dementia embroideries were part of the Festival and are on view in The Hostry at The Cathedral until 1st April.

They are a woman's observation in stitch of how Dementia progresses. Worth a lunchtime visit if you are working in the city"



Contact: T: 01603 219753 | E: thrive@stgeorgesworks.uk
Connect: stgeorgesworks.uk | [#stgeorgesworks](https://www.instagram.com/stgeorgesworks) | [@stgeorges_works](https://www.instagram.com/stgeorges_works)

