

# THE SHOE QUARTER NEWS



March 2024

## Management Memo

Many of you will already be aware, but for those who haven't yet heard, we will be saying a sad farewell to our fantastic Facilities Manager, Marcella before the end of April.

Marcella joined The Shoe Quarter team as Hub Manager in the summer of 2017, before stepping up just a year later into the Facilities Manager position and making health and safety her key focus.

Organised, approachable and confident in her role, especially when dealing with contractors, Marcella always ensured that she made time for tenant wellbeing, and office dogs, across both St Mary's and St George's Works, so I'm sure you'll join us in wishing her every success with her future endeavours.

Clare, who joined the team just over a year ago, will be expanding her existing role to take up responsibility for Facilities Management at the Shoe Quarter, so you'll be seeing her out and about on site a bit more often over the coming weeks and months.

Having spent her first year with us building up tenant engagement and social reach, while handling enquiries and lettings, and helping to refresh our branding, we are sure that Clare will enjoy the new challenge and quickly make the role her own.

Of course, all of this means that there will be a new starter on the team toward the end of the month, more details on this to follow... Giff

### Tenant Drinks



We held our first tenant drinks of the year last week at Dicks Bar, it was great to see so many of you and the feedback so far has been fab, Great food, drinks and company, an awesome time was had by all.

Many thanks to Tom and Andy for hosting a great night!

# TENANT'S NEWS



Dick's Bar held its second event night in March, hosted by our resident DJ plus guest, and it was a great night full of lovely people, great tunes and cool vibes! We've never seen so many shots being poured, so we know people were having a good time!



We are now a year old and now open 7 days a week. We have also made it to the final of the **Muddy Stiletto Awards** for best bar!

Please vote for us at [muddystiletto.co.uk/awards](http://muddystiletto.co.uk/awards)  
Thank you for your love and support.

Only good choices 🙌



The Royal Drawing School will be continuing their drawing courses for young people this summer and booking is now open!

The two-hour drawing courses for students aged 10 – 18 run every Saturday during term time. Taught by professional practicing artists, the weekly classes are an opportunity for students to develop their passion for drawing in a creative and supportive environment.

They will create collaborative works, theatrical sets and animations as well as venturing into Norwich to draw the city. We have our own dedicated studio in St Mary's House, with artists' easels and a range of different materials.

Older students are invited to submit artworks to our annual Young Artists Exhibition in our Shoreditch studios in London.

Summer Term dates: Saturdays, 27 April – 29 June (10 sessions)  
**Drawing Clubs** (10-14yrs), 11am – 1pm, [further details](#)

**Young Associates** (15 – 18yrs), 2pm – 4pm, [further details](#) and how to book please see our website: [Young Artists | The Royal Drawing School](#)



Together  
we raised  
**£64**  
for Comic Relief



RICS Homebuyer Reports, Building Surveys,  
and Valuations in Norfolk & Norwich

Chartered Surveyors and Valuers with technology to make the booking  
and payment process as easy as possible for you.



EXCLUSIVE  
DISCOUNT CODE  
SGW50

**MOVING HOUSE? OR KNOW SOMEONE WHO IS...**  
Use the St. George's Works exclusive discount code to  
receive £50 off when booking a survey through our website.

01603 605 610  
[hello@peeringsurveyors.com](mailto:hello@peeringsurveyors.com)

Scan Here



Peer | King  
Surveyors. 

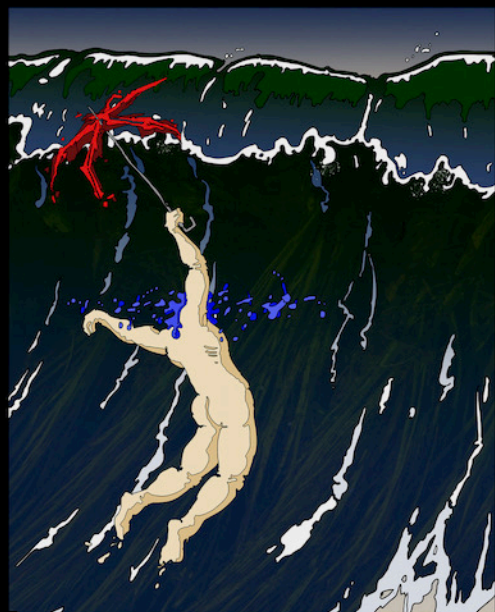


**Contact:** T: 01603 219753 | E: [thrive@stgeorgesworks.uk](mailto:thrive@stgeorgesworks.uk)  
**Connect:** [stgeorgesworks.uk](https://www.stgeorgesworks.uk) | [stgeorgesworks](https://www.instagram.com/stgeorgesworks) | [@stgeorges\\_works](https://www.facebook.com/stgeorges_works)

OUR PLACE



# TENANT'S NEWS



## BEING BEANMAN

### Being Beanman

#### The Lives and Times Of The Beans

The Beans are leaving the studio and venturing into the world!

They are the focus of a solo exhibition by Simon Marshall from Studio 13 in St Mary's House.

It brings together large scale, colourful and challenging images produced in the last four years, reflecting the lives of The Beans, their view of the world, their dreams and hopes for the future.

The Undercroft Gallery,  
Norwich Market NR2 1ND

May 4th to 25th 2024

Wednesdays to Saturdays 11am to 5pm

[beingbeanman@gmail.com](mailto:beingbeanman@gmail.com)  
[www.simmarshall.co.uk](http://www.simmarshall.co.uk)



Thank you to everyone who contributed to our successful fundraiser.



We're very pleased to announced that we smashed our £200 target and ended up raising a fantastic £292.52 for [Alzheimer's Society](#).

A big thank you to our star bakers and to everyone who donated!

### Acting with Confidence joins SGW - April '24

As well as training actors, I use performing arts techniques to coach non-actors in developing confidence in their public speaking, interview and presentation skills.

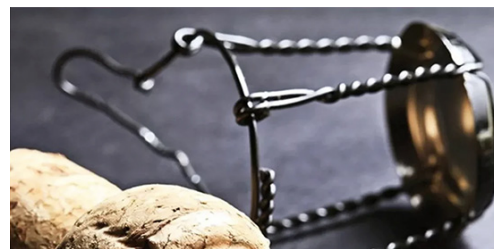
If this could be helpful for you or anyone you know, please do contact me at [jacqueline@actingwithconfidence.co.uk](mailto:jacqueline@actingwithconfidence.co.uk) or visit me on a Tuesday in 3.1 at St George's Works.

### Fashion From Vintage

#### Cat Nash - Alteration Service

Cat is on the look out for muselet's, the metal cages that go around a cork on wine etc, should you have any to spare please get in touch.

T: 07730 454782 E: [alterations@catnash.com](mailto:alterations@catnash.com)



### NEWSLETTER CONTRIBUTIONS

Please forward the details to [Clare@our.place](mailto:Clare@our.place) and we will endeavour to include it in the next edition.

### CONUNDRUM OF THE MONTH

"HIPPIE STAR"

(First person to reply to Clare gets a free coffee)



Contact: T: 01603 219753 | E: [thrive@stgeorgesworks.uk](mailto:thrive@stgeorgesworks.uk)  
Connect: [stgeorgesworks.uk](http://stgeorgesworks.uk) | [stgeorgesworks](https://www.instagram.com/stgeorgesworks) | [@stgeorges\\_works](https://www.facebook.com/stgeorges_works)

OUR PLACE